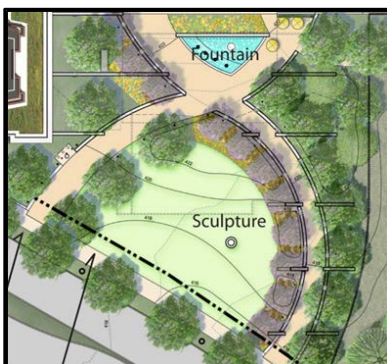
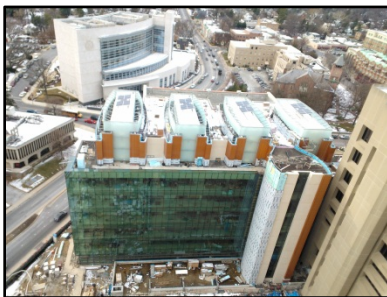


JUDICIAL CENTER ANNEX

- Montgomery County, Maryland

CONTACT: Randall Hawkins

PHONE: 240-777-6099



PROJECT DESCRIPTION...

This OSP project involves an addition to and renovation of the existing Judicial Center. The Judicial Center Annex is a six-story building with one level underground parking and one level mechanical penthouse. The Annex provides ten additional courtrooms and administrative spaces. The renovation of the existing judicial center includes upgrading interior spaces, mechanical, electrical and plumbing upgrades. The project will be designed to comply with Leadership in Energy and Environmental Design (LEED) guidelines for LEED Silver (potentially Gold certification) which includes a green roof and roof mounted photovoltaic panels. The existing plaza and green spaces will be redesigned to invite public use of the space. The green space will include a water fountain, new trees, benches and a Memorial Walkway to receive the memorial plaques that will be relocated to allow for the construction of the Annex. Refer to the site plan image for the location of the Memorial Walkway.

The project consists of three phases. Phase one includes the existing Judicial Center HVAC renovation for floor 6-9 and the penthouse roof. Phase two includes the construction of the Annex and the phase three encompasses the interior renovation and upgrades of the remaining area of the existing Judicial Center.

SCOPE OF WORK...

The Robert B. Balter Company (Balter) is performing Materials Testing, Quality Control, Laboratory Services, and Engineering Support for the repair work at the Judicial Center building. Balter's services include shoring, tie-backs, formwork systems; soils, earthwork, deep foundations; reinforcing steel, cast-in-place concrete, post-tensioned decks, structural steel framing, metal decking, light gauge framing, and precast architectural panels, fireproofing and structural masonry, utilities, WSSC water and sewer lines, and pavements. All inspection documentation and engineering submittals included daily reports and test data, tracking non-compliance logs, in accordance with MCDPS requirements and permitted plans and specifications.

ADDED VALUE...

Balter's field inspectors, managers and engineers are working closely with the County representatives to anticipate and prevent construction defects. Balter created a specific special inspections plan which met the City of Rockville and County Special Inspections Requirements. Our significant experience resulted in a high level of inspections, whereas we observed potential construction deficiencies, and worked with the County and the general contractor to change procedures and/or materials to prevent non-compliances. Balter's team provided cost effective and timely solutions to the County when unforeseen construction issues arose. Reports are summarized and submitted to the Code Enforcement agency in accordance with OSP and MCDPS requirements and approved permitted plans and specifications.



THE ROBERT B. BALTER COMPANY.

*Geotechnical Engineering, Subsurface Exploration
Construction Inspection and Materials Testing*